



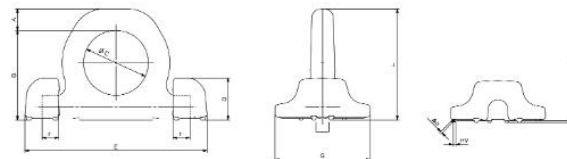
Lifting ring SPAR



- Inele de prindere sudabile
- Puncte de prindere, inele de ridicare cu fixare prin sudare in doua puncte pe piesa de ridicat – SPAR/ Grad 10
- Inel pentru ridicarea sarcinilor sudabil.
 - Intregul perimetru al bazei trebuie sudat exceptie facand zona de evacuare a apei.
 - Pentru sarcini asimetrice aduceti-va aminte ca capacitatea de ridicare trebuie redusa asa cum este aratat in tabelul de referinta.
 - Punctul de ancorare poate fi utilizat in conditii de siguranta pana la 20.000 de ridicari la capacitatea maxima
 - Coeficient de securitate 4
 - Inel testat 100% magnaflux
 - Fabricat din otel de inalta rezistenta
 - Acoperit cu vopsnea epoxidica
 - Testat la 20.000 cicluri de utilizare



For the correct installation of the device position the base to lock near the reference notches shown on the bracket



DATE TEHNICE

- Ring to be welded for load lifting.
- The entire perimeter of the base must be welded except for the water discharge area
 - For asymmetric loads remember that the capacity has to be reduced as shown in the reference table
 - The anchorage clamp can be used safely up to maximum of 20.000 lifts with a full load
 - Safety coefficient 4
 - Ring tested 100 % magnaflux
 - Made in high resistant steel
 - Painted with epoxy paint
 - Tested at 20.000 stress cycles

Maße / Measurements

Artikel Article	M-WLL	A	B	C	D	E	F	G	H	Dicke der Schweißnaht Welding thickness	Gewicht ca. kg Weight approx.
31801004	4,0	14	65	48	29	134	14,0	60	79	HV 4-3	0,73
31801006	6,7	20	83	60	39	169	16,0	88	103	HV 5,5+3	1,80
31801010	10,0	22	96	65	48	196	19,5	98	118	HV 6+4	3,00
31801016	16,0	31	126	90	55	264	29,0	127	155	HV 8,5 +4	5,75
31801030	30,0	42	175	130	79	371	45,0	157	217	HV 15+4	16,00

Tragfähigkeiten / WLLs



Artikel Article	0°	0° 2Stränge 2 legs	90° 1Strang Single leg	90° 2Stränge 2 legs	0°-45°	45°-60° 2Stränge 2 legs	Asym.	0°-45°	45°-60° 4Stränge 4 legs	Asym.
31801004	4,0	8,0	4,0	8,0	5,60	4,0	4,0	8,4	6,0	4,0
31801006	6,7	13,4	6,7	13,4	9,38	6,7	6,7	14,1	10,1	6,7
31801010	10,0	20,0	10,0	20,0	14,00	10,0	10,0	21,0	15,0	10,0
31801016	16,0	32,0	16,0	32,0	22,40	16,0	16,0	33,6	24,0	16,0
31801030	30,0	60,0	30,0	60,0	42,00	30,0	30,0	63,0	45,0	30,0